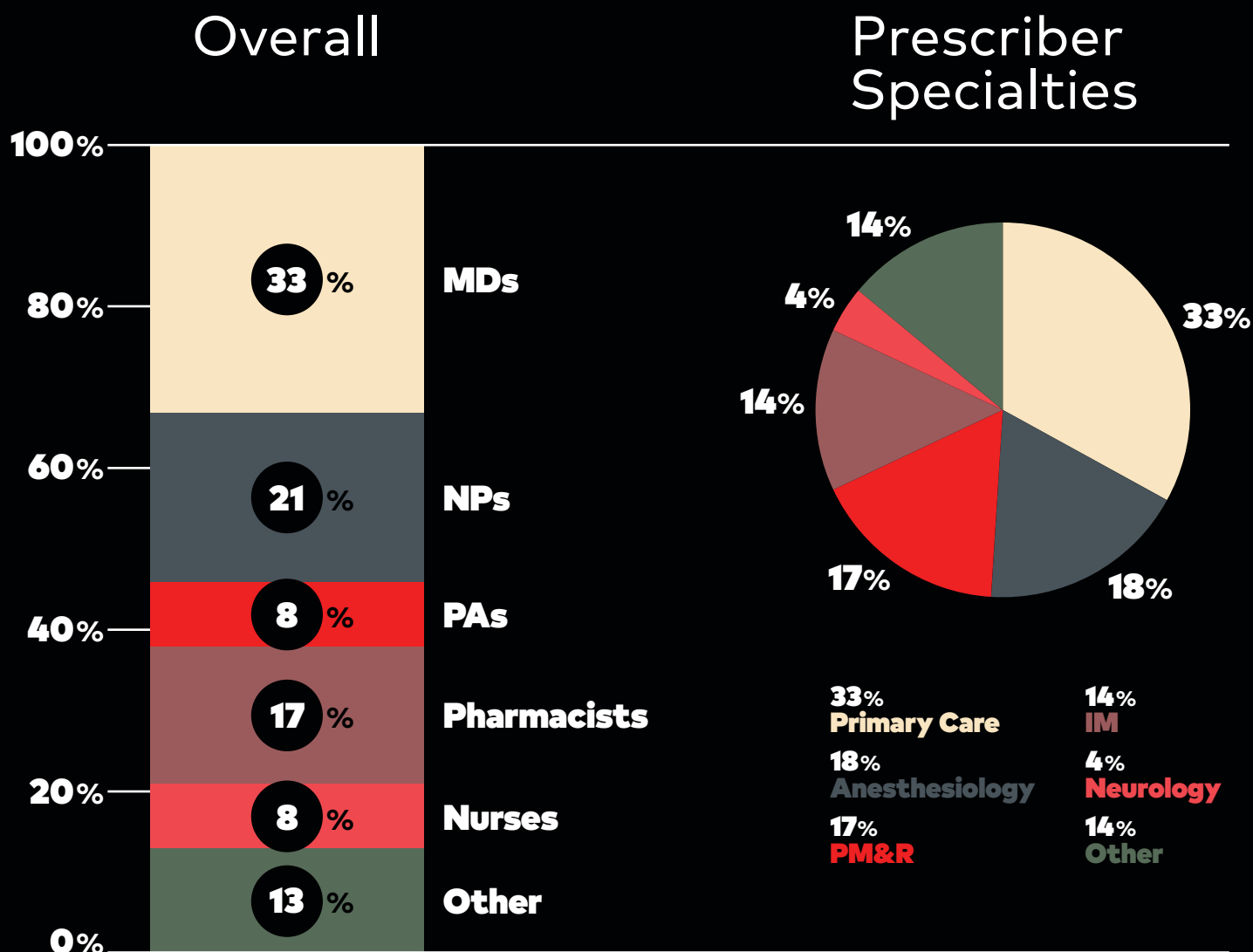


Painweek.

Grant Opportunities

Live • Digital • Print

Over 2000 Attendees



**Accelerate awareness
of your brand with this highly
diverse, multidisciplinary group
of frontline practitioners!**

The **PAINWeek** Education Platform consists of live, digital, and print activities that annually reach over 20,000 frontline practitioners. This prospectus provides information on opportunities available for grant support for activities disseminated across the annual PAINWeek National Conference, PAINWeekEnd Regional Conferences, Premiere Webinars, and the quarterly *PWJ—PAINWeek Journal*.



1

Target Audience

- Physicians
 - Pain Specialists
 - Primary Care
- Physician Assistants
- Pharmacists
- Physical Therapists
- Psychologists
- Nurses
- Nurse Practitioners

2

Topic Areas

- Acute Pain Management
- Cannabinoids
- Chronic Pain Management
- Geriatric and Pediatric Pain Management
- Health Coaching
- Interventional Pain Management
- Medication Assisted Therapy
- Medical/Legal Issues
- Migraine
- Opioid Induced Disorders
- Osteoarthritis
- Palliative Care
- Pharmacotherapy
- Regional Pain Syndromes
- Substance Abuse Disorder

3

Grant Support Opportunities

Over 5,000 healthcare providers are reached yearly at the PAINWeek national and PAINWeekEnd regional conferences. The national conference provides over 120 hours of accredited education over 5 days.

Grant opportunities are available for satellite programs for both meal and non-meal formats.

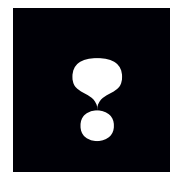
Live

1 PAINWeek

National Conference
September 7–11

- Inline (non-meal)
 - 50-minute general session
 - **\$25,000**
 - Average attendance: 250–350 learners
- Breakfast and Lunch Satellite Symposia
 - **\$65,000**
 - Average attendance: 325–400 learners





For additional information on how to maximize your PAINWeek experience, please contact:

● **Mike Shaffer**
ms@tarsuscns.com
(973) 233-5572

Live CONTINUED

2 PAINWeekEnd

Regional Conferences
Q1-Q4 2021

- Inline (non-meal)
50-minute general session

→ **\$18,000**

→ Average attendance:
125–150 learners

- Breakfast and Lunch
Satellite Symposia

→ **\$40,000**

→ Average attendance:
125–150 learners

- General Conference Support
- **\$10,000**
-



New!

Live Streaming Add-on:

\$20,000

Activities can be live streamed to PAINWeek subscribers who are unable to attend the live conference in Las Vegas.

Enduring Add-on:

\$10,000

All enduring programs will be hosted on www.painweek.org for 1 year after the conference.

Digital

Due to COVID-19, PAINWeek pivoted to virtual CME and successfully launched the PAINWeek Premiere Webinar series. These webinars provide added value to PW subscribers and serve as another vehicle to introduce our education to HCPs interested in pain management. Webinar specifications are as follows:

- One webinar per week (Wed or Sat)
- 2–3 hours of certified content presented at each webinar
- Webinar registrations are complimentary to PW subscribers, and \$99 for any other participating HCP
- Educational content can be live or pre-recorded
- Polling and live Q&A are supported
- Attendance: 100 HCPs (approx.)

All grant supported sessions include:

- One 50-minute presentation slot
- One encore presentation
- One pre-webinar email to all registered attendees
- One post-event email to all registered attendees
- All relevant session reporting

PW Premiere Webinar Slot Fees

- 50-minute presentation slot
- **\$10,000** per webinar (1 slot)
- **\$8,500** per webinar (2–4 slots)
- **\$7,500** per webinar (5+ slots)

Print

The *PWJ—PAINWeek Journal* is published quarterly and mailed to 10,000 HCPs actively managing acute and chronic pain. Bonus distribution includes 5,000+ at PWE Regional Conferences. The pricing noted below is the equivalent of our live slot fees, ie, they do not include content development or graphic design.

● **CME Article**

Published within the journal
→ **\$9,500** (5–10 pages)

● **CME Journal Supplement**

Developed by a medical education partner, delivered to our printer, and polybagged with the journal
→ **\$14,500** (8–16 pages)
→ **\$17,000** (17–24 pages)

Note:

Articles and journal supplements will also be hosted at www.painweek.org



Education is the best analgesic.

PWJ
PAINWORK JOURNAL



WHAT'S INSIDE:

...and the ...

PWJ
PAINWORK JOURNAL



WHAT'S INSIDE:

...and the ...

PAINWORK 2017 CONFERENCE PREVIEW ...

PWJ
PAINWORK JOURNAL



WHAT'S INSIDE:

...and the ...

PAINWORK 2017 CONFERENCE PREVIEW ...

PWJ
PAINWORK JOURNAL



WHAT'S INSIDE:

...and the ...

PAINWORK 2017 CONFERENCE PREVIEW ...

PWJ
PAINWORK JOURNAL

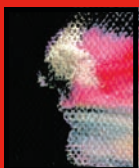


WHAT'S INSIDE:

...and the ...

PAINWORK 2017 CONFERENCE PREVIEW ...

PWJ
PAINWORK JOURNAL



WHAT'S INSIDE:

...and the ...

PWJ
PAINWORK JOURNAL



WHAT'S INSIDE:

...and the ...

PAINWORK 2017 CONFERENCE PREVIEW ...

PWJ
PAINWORK JOURNAL



WHAT'S INSIDE:

...and the ...

PAINWORK 2017 CONFERENCE PREVIEW ...

PWJ
PAINWORK JOURNAL



WHAT'S INSIDE:

...and the ...

PAINWORK 2017 CONFERENCE PREVIEW ...

PWJ
PAINWORK JOURNAL

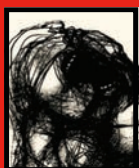


WHAT'S INSIDE:

...and the ...

PAINWORK 2017 CONFERENCE PREVIEW ...

PWJ
PAINWORK JOURNAL



WHAT'S INSIDE:

...and the ...

2018 PAINWORK CONFERENCE PREVIEW ...

PWJ
PAINWORK JOURNAL



WHAT'S INSIDE:

...and the ...

2018 PAINWORK CONFERENCE PREVIEW ...

PWJ
PAINWORK JOURNAL



WHAT'S INSIDE:

...and the ...

2018 PAINWORK CONFERENCE PREVIEW ...

PWJ
PAINWORK JOURNAL



WHAT'S INSIDE:

...and the ...

2018 PAINWORK CONFERENCE PREVIEW ...

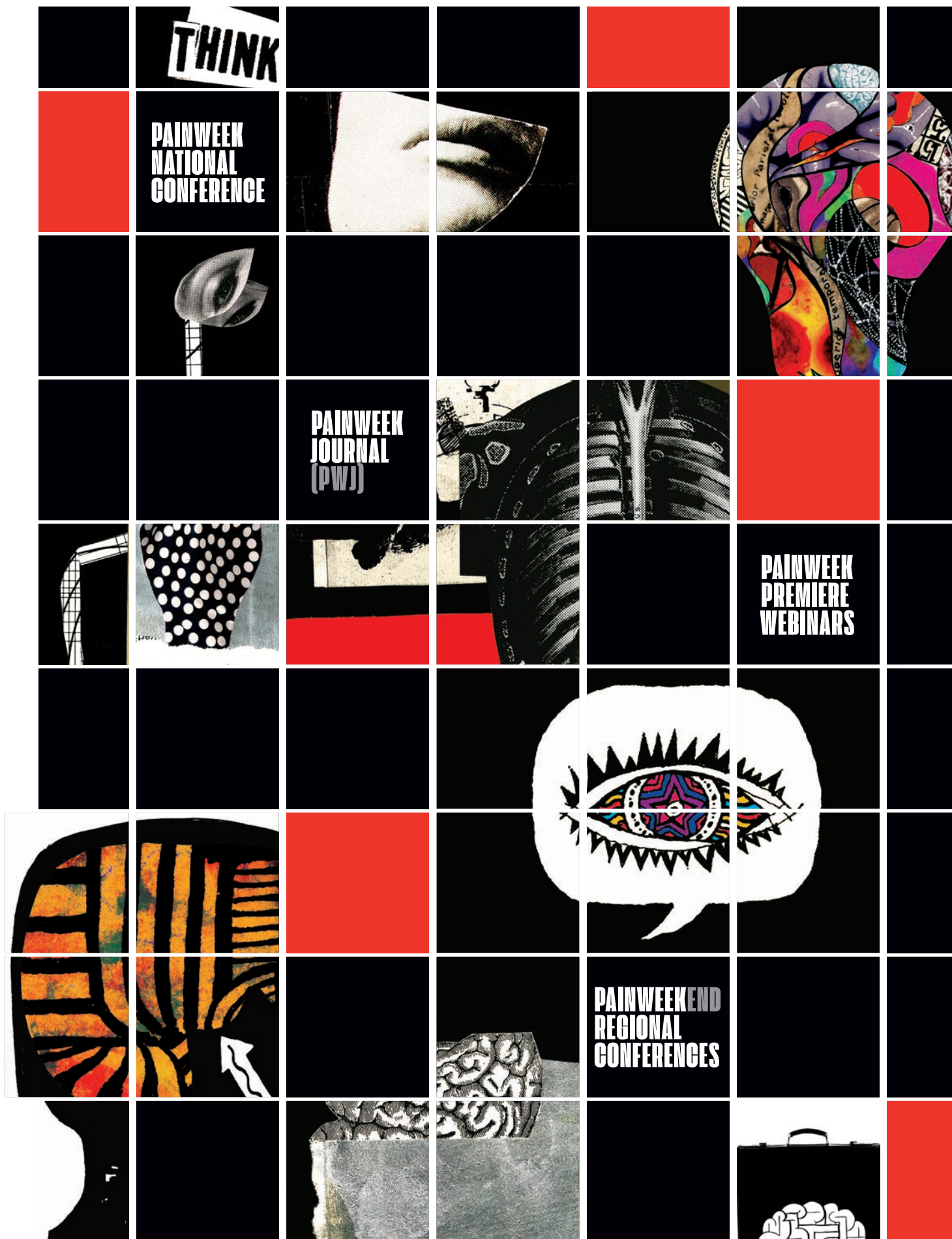
PWJ
PAINWORK JOURNAL



WHAT'S INSIDE:

...and the ...

2018 PAINWORK CONFERENCE PREVIEW ...



Contact → Mike Shaffer ms@tarsuscns.com or (973) 233-5572

www.painweek.org